

VMA - Haustönn 2024

Aldursdreifing og kyn nemenda í VMA

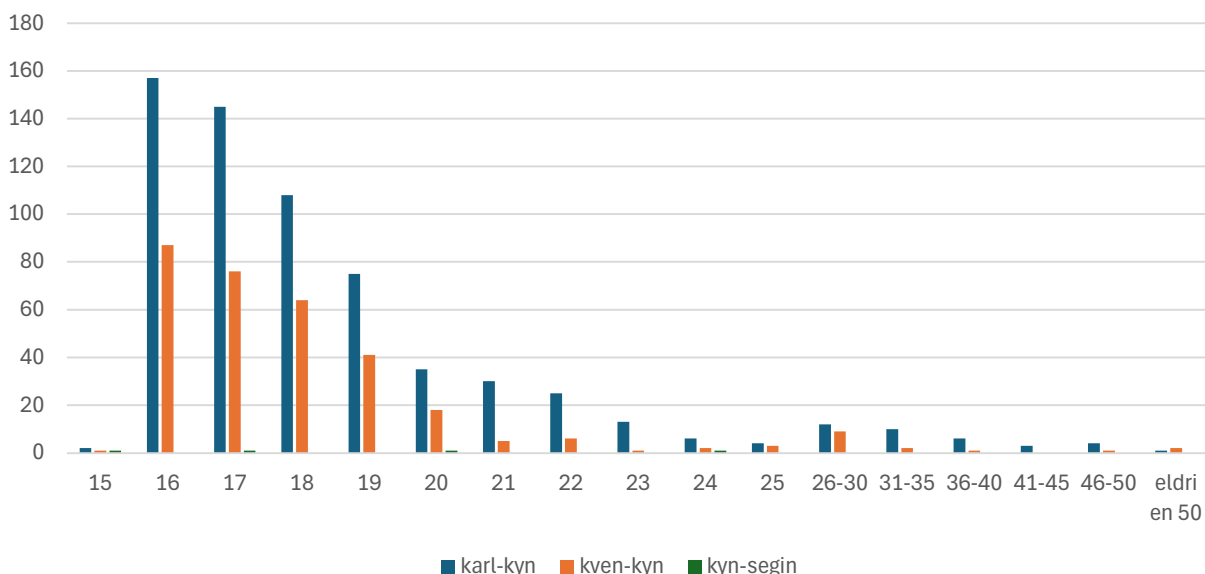
Alls eru skráð 959 í dagskóla og 75 í kvöldskóla þegar þessar tölur eru teknar.

Fyrirvarar eru um að einhver hafa verið skráð í skólann eftir að þessar tölur eru teknar saman og einhver hafa fallið brott vegna ófulkominnar skráningar.

Dagskóli VMA haustönn 2024 alls 959 nemar.

| aldur | karl-kyn | kven-kyn | kyn-segin | alls | hlutfall kynja af árgangi | | | hlutfall árg af heild |
|-------------|----------|----------|-----------|------|---------------------------|----------|-----------|-----------------------|
| | | | | | karl-kyn | kven-kyn | kyn-segin | |
| 15 | 2 | 1 | 1 | 4 | 50.0% | 25.0% | 25.0% | 0.4% |
| 16 | 157 | 87 | | 244 | 64.3% | 35.7% | 0.0% | 25.4% |
| 17 | 145 | 76 | 1 | 222 | 65.3% | 34.2% | 0.5% | 23.1% |
| 18 | 108 | 64 | | 172 | 62.8% | 37.2% | 0.0% | 17.9% |
| 19 | 75 | 41 | | 116 | 64.7% | 35.3% | 0.0% | 12.1% |
| 20 | 35 | 18 | 1 | 54 | 64.8% | 33.3% | 1.9% | 5.6% |
| 21 | 30 | 5 | | 35 | 85.7% | 14.3% | 0.0% | 3.6% |
| 22 | 25 | 6 | | 31 | 80.6% | 19.4% | 0.0% | 3.2% |
| 23 | 13 | 1 | | 14 | 92.9% | 7.1% | 0.0% | 1.5% |
| 24 | 6 | 2 | 1 | 9 | 66.7% | 22.2% | 11.1% | 0.9% |
| 25 | 4 | 3 | | 7 | 57.1% | 42.9% | 0.0% | 0.7% |
| 26-30 | 12 | 9 | | 21 | 57.1% | 42.9% | 0.0% | 2.2% |
| 31-35 | 10 | 2 | | 12 | 83.3% | 16.7% | 0.0% | 1.3% |
| 36-40 | 6 | 1 | | 7 | 85.7% | 14.3% | 0.0% | 0.7% |
| 41-45 | 3 | | | 3 | 100.0% | 0.0% | 0.0% | 0.3% |
| 46-50 | 4 | 1 | | 5 | 80.0% | 20.0% | 0.0% | 0.5% |
| eldri en 50 | 1 | 2 | | 3 | 33.3% | 66.7% | 0.0% | 0.3% |
| alls | 636 | 319 | 4 | 959 | 66.3% | 33.3% | 0.4% | |

VMA haust 2024, aldur og kyn nemenda, aldur við áramót 24/ 25.
959 nemar, bara dagskóli, hvorki kvöldskóli né fjarnám.



VMA - Haustönn 2024

Aldursdreifing og kyn nemenda í VMA

Kvöldskóli VMA - Haustönn 2024 alls 75 nemar.

Í kvöldskóla eru heilsunudd, húsasmíði, kjötiðñ, listnám, múraraíðñ, matartækni og rafvirkjun.

| aldur | karl-kyn | kven-kyn | kyn-segin | alls | hlutfall kynja af árgangi | | | hlutfall árg af heild |
|-------------|----------|----------|-----------|------|---------------------------|----------|-----------|-----------------------|
| | | | | | karl-kyn | kven-kyn | kyn-segin | |
| 20 og yngri | 2 | 1 | | 3 | 66.7% | 33.3% | 0.0% | 4.0% |
| 21-25 | 10 | 2 | | 12 | 83.3% | 16.7% | 0.0% | 16.0% |
| 26-30 | 11 | 3 | | 14 | 78.6% | 21.4% | 0.0% | 18.7% |
| 31-35 | 5 | 2 | | 7 | 71.4% | 28.6% | 0.0% | 9.3% |
| 36-40 | 1 | 4 | | 5 | 20.0% | 80.0% | 0.0% | 6.7% |
| 41-45 | 8 | 4 | | 12 | 66.7% | 33.3% | 0.0% | 16.0% |
| 46-50 | 1 | 6 | | 7 | 14.3% | 85.7% | 0.0% | 9.3% |
| eldri en 50 | 4 | 11 | | 15 | 26.7% | 73.3% | 0.0% | 20.0% |
| | 42 | 33 | 0 | 75 | 56.0% | 44.0% | 0.0% | 100.0% |

